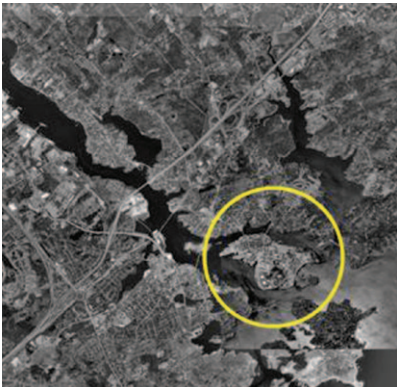


# KITTERY-PORTSMOUTH NAVAL SHIPYARD

KITTERY, MAINE



The Kittery-Portsmouth Naval Shipyard, located on the 297-acre Seavey Island in the Piscataqua River Estuary in the Town of Kittery, Maine, is the oldest naval shipyard continuously operated by the United States government since its establishment in June 1800. The base includes 179 buildings with over 3,000,000 square feet of space, 49 ship repair and overhaul buildings, and 6,224 linear feet of berthing facilities. The Base has a plant value for real property in excess of \$1 billion, and plant equipment valued at approximately \$500 million.

With the possibility of the shipyard being included on the 2005 Base Realignment and Closure (BRAC) list, the Southern Maine Regional Planning Commission requested a Planning Assistance Grant from the Office of Economic Adjustment (OEA) to study potential governance and property disposition issues, assess the site's potential assets and liabilities, identify redevelopment and reuse planning issues, and to address legal issues and policies related to disposition schedules, reuse options, municipal service issues, and the overall issue of privatization of the island.

In addition to guiding the team's approach to planning and assessment of the site, Matrix provided background on the Town's municipal services capabilities and insight into the shipyard's transportation and infrastructure systems, land use and building information, and energy systems. Matrix also prepared a detailed timeline and methodology flow chart that identified specific action items that could be anticipated by the Town of Kittery and how those actions would integrate with actions by the federal government over an eighteen month time frame.

Matrix Environmental Services, LLC, a subsidiary of Matrix Design Group, Inc., provided an assessment of the existing environmental clean-up activities and related issues important for consideration in the reuse process.

## PROFESSIONAL SERVICES

Planning

Infrastructure Analysis

Environmental Consulting